



July 2019 Newsletter

New Website: Mapping Options

Everyone knows about Google's ability to show maps. Their standard mapping is a great way to plot your vehicles. Did you know that our system has other mapping options besides the standard Google Map? We can do a Google - Hybrid map that shows the satellite view as well as the roads and the traffic (if you turn it on). We also have a map from OpenStreet.

To change your mapping option, click the icon in the top right that looks like a layer:

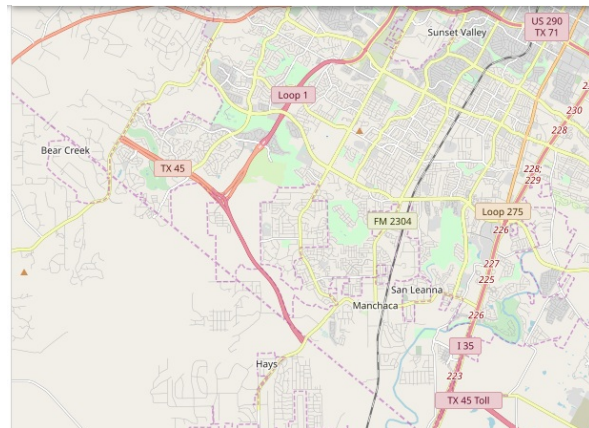
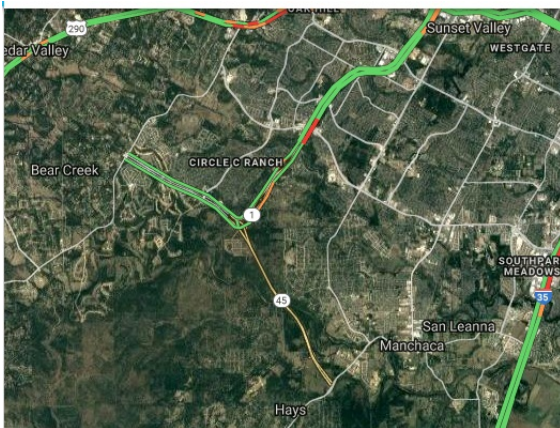


That will bring up your options:

- OpenStreetMap
- Google - Road
- Google - Terrain
- Google - Hybrid
- Google - Satellite

- Traffic

This is also where you can turn on the traffic information as provided by Google. You can see here the Google - Hybrid and the OpenStreetMap:



It is your choice as to what you want to use as a map, just keep in mind you have options.

Quick Tip - Live Grid (New Website)

Live grid

Fleet

All fleets ▾

Austin

San Antonio

Austin

San Antonio

Do you want to see a quick reporting status of all your vehicles? Click on the Live Grid on the new website and you can see the color coding of the Last Updated column and that color will tell you when the unit last reported. The Blue color indicates that the unit last reported within 15 minutes of the current time. The Yellow color indicates that the unit reported between 15 minutes and 3 hours, and the Orange color indicates that the unit reported in more than 3 hours ago from the current time. This is a quick way to see a list of when all your units reported in.



Need the Mobile App?

Do you need to download the mobile app to use? Follow this link to our website for the specific link and setup information: [Mobile Apps](#)

Visit our Website